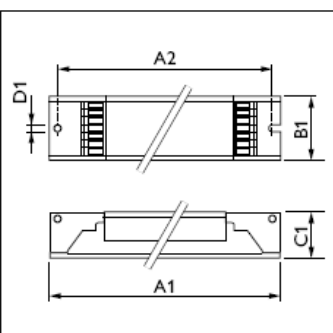


# 安定器

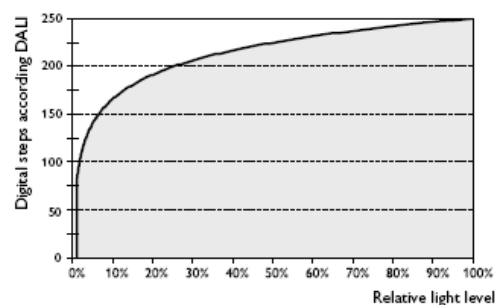
## TL5 專用調光式安定器 HF-R II DALI 系列

NEW

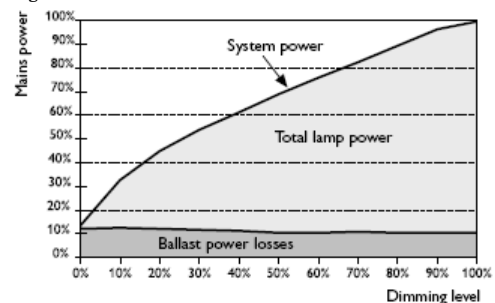


Type	A1Nom	A2Nom	C1Nom	D1Nom
HF-RegulatorTD 1 14-35/149/154/180/2 14-35/249/254	360	350	22	4.2
HF-RegulatorTD 124/139/224/239/314/324/414/424	359	350	22	4.2
HF-RegulatorTD 280	425	415	22	4.2
HF-RegulatorTD 2 95-120	425	415	28	4.2

Type	Number of Lamps (x)	Rated Gear-Lamp Power	Power losses gear (W)
HF-RegulatorTD 1 14-35 TL5 EII 220-240V 50/60Hz	1	14-35	3.5-4.4
HF-RegulatorTD 124 TL5/PL-L EII 220-240V	1	24	4.5
HF-RegulatorTD 139 TL5 EII 220-240V 50/60Hz	1	39	5.8
HF-RegulatorTD 149 TL5 EII 220-240V 50/60Hz	1	49	5.3
HF-RegulatorTD 154 TL5 EII 220-240V 50/60Hz	1	54	6.6
HF-RegulatorTD 180 TL5/PL-L EII 220-240V	1	80	7
HF-RegulatorTD 2 14-35 TL5 EII 220-240V 50/60Hz	2	14-35	5.3-6.5
HF-RegulatorTD 224 TL5/PL-L EII 220-240V	2	24	7.3
HF-RegulatorTD 239 TL5 EII 220-240V 50/60Hz	2	39	5.9
HF-RegulatorTD 249 TL5 EII 220-240V 50/60Hz	2	49	7.9
HF-RegulatorTD 254 TL5 EII 220-240V 50/60Hz	2	54	11
HF-RegulatorTD 280 TL5/PL-L EII 220-240V	2	80	13.2
HF-RegulatorTD 2 95-120 TL5 EII 220-240V	2	95-120	12
HF-RegulatorTD 314 TL5 EII 220-240V 50/60Hz	3	14	7.7
HF-RegulatorTD 324 TL5/PL-L EII 220-240V	3	24	11.2
HF-RegulatorTD 414 TL5 EII 220-240V 50/60Hz	4	14	9.9
HF-RegulatorTD 424 TL5/PL-L EII 220-240V	4	24	16.4



Relationship between lamp power and digital regulation



Input power vs dimlevel HF-REGULATOR II (Touch and DALI)

### Mains operation

Rated mains voltage	220 - 240 V
With tolerances for safety +/- 10%	198 - 264 V
Performance tolerance +6%-8%	202 - 254 V
Mains frequency	50/60 Hz

### Control input

Regulating level (lamp power) 1 to 100%

The control input complies with EN 60929 (Annex E) and is compatible with Philips lighting control equipment

Standby power consumption

< 350 mW

Control input insulation, basic insulation

≥ 1500 V



凡球照明股份有限公司

TEL: 02-8512 3888 FAX: 02-8512 3439

<http://www.circleworld.com.tw>

台北縣三重市光復路二段 80 號 9 樓之 7

Email: john@circleworld.com.tw